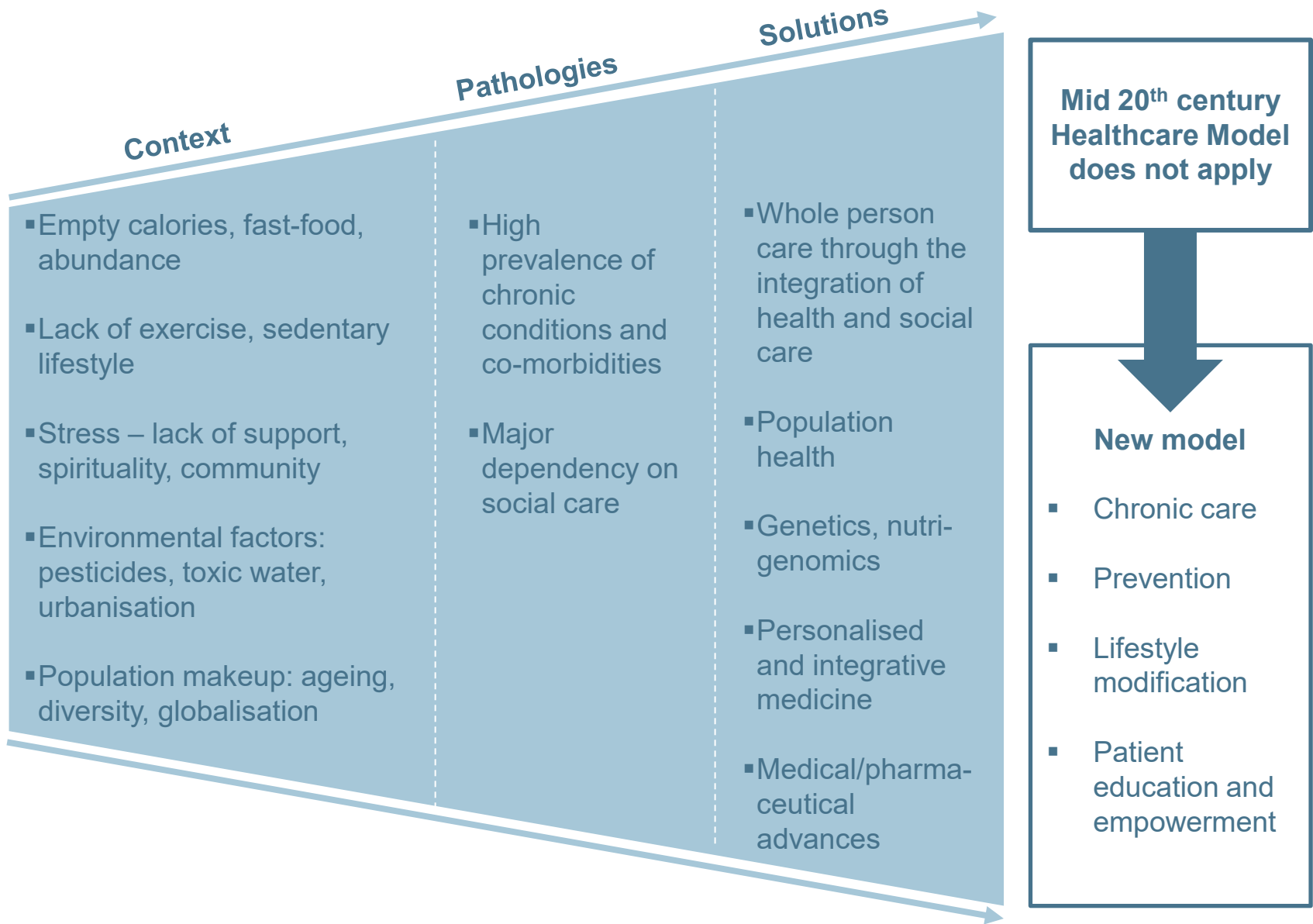


Health and social care reform

October 5, 2021

21st Century forces expand the focus of Medicine



Recent government announcements

- A good first step on the road to reform
- In the short term probably all of the £36 billion (over 3 years) will be spent by the NHS to reduce the backlog
- However, the government's initiative could help many people from 2023 by £1 billion to £4 billion a year

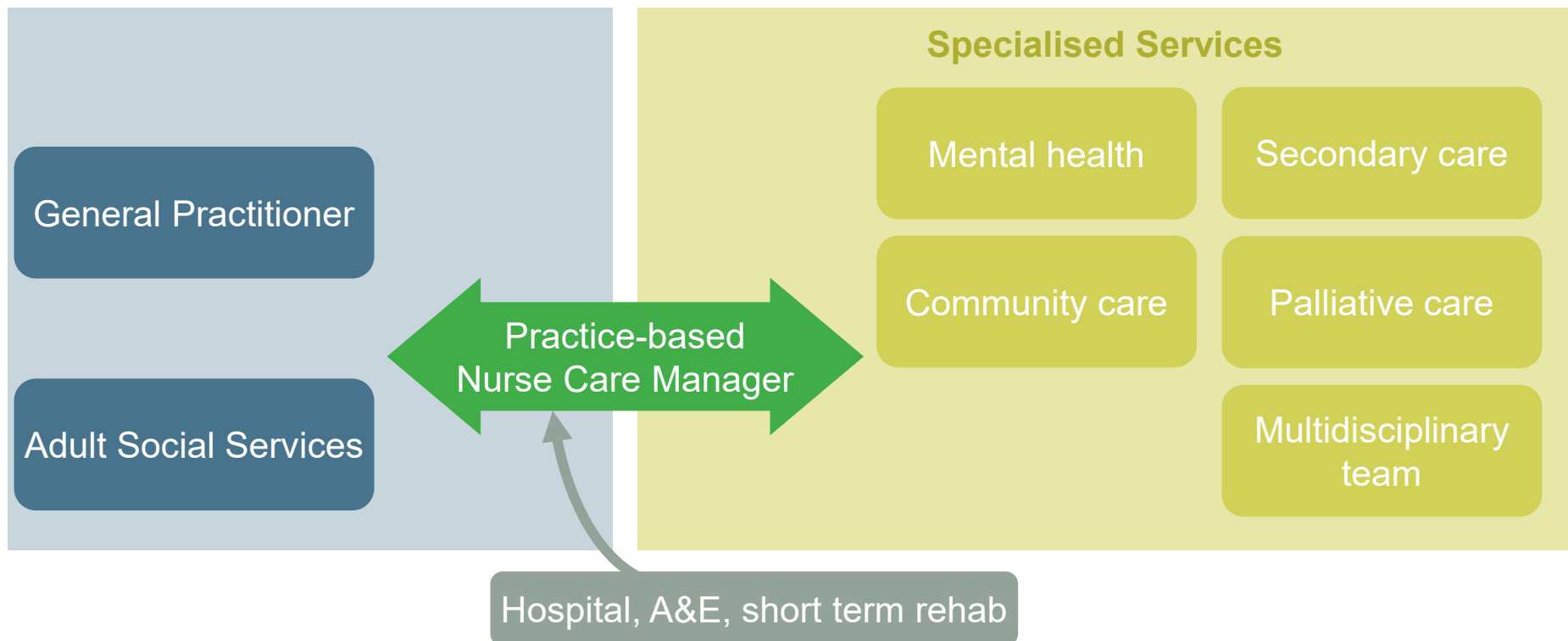
A good first step....but follow-on reform is important

Much greater funding is required even to return to 2010 levels of social care and to 'save' the NHS

- More money to support the 300,000 working age adults and 550,000 frail elderly patients
- Wide public and industry support is required

Fully integrate health and social care around patient pathways

Overview of High Risk Care Management Programme



- Within Bromley's 320,000 population, there are 1,700 high risk patients.
- For these 1,700 high risk patients, there are about 20 Practice-based Nurse Care Managers
 - These Care Managers are based in the GP Practice and have a case load of high risk patients to manage, bridging the gap between Primary Care and Specialised Services
 - GPs play a 'central supervision' role within Primary Care, without managing a case load

Fully integrate the funding and operation of health and social care

- Integrate budgets and funding (hypothecated tax?)
- Re-define the NHS charter (dementia)
- Integrate the workforces and the Brand
- Regulate to raise fee rates and eradicate financial/operational leverage

Get to the root causes of ill health and health inequality

And finally....only 20% of a person's health is affected (for better or worse) by health and social care

'A boy born today in the most deprived areas of England can expect to live about 19 fewer years in good health and die nine years earlier than a boy born into the least deprived area'